



Last Updated: May 26, 2017

Master Integration List for IP Cameras and Encoders

About GiPi

Generic IP Integration (GiPi) is i3's solution to fast IP video device integration with SRX-Pro Server software. By utilizing GiPi module, i3 is able to rapidly integrate with new IP cameras/encoders without having to release a new version of the SRX-Pro Server. A new executable GiPi file is released every time new IP cameras/encoders are added to the supported list.

The latest GiPi adapter file can be downloaded from our website: <http://i3international.com/software-downloads>, under SRX-Pro Add-ons.

Important Notes:

- h.264 codec is supported by SRX-Pro Server v.2.1 and higher.
- ONVIF GiPi feature is supported by SRX-Pro Server v.3.2.1 and higher. Provided that the manufacturer's IP device closely follows the ONVIF standard, i3's GiPi has a method of connecting to the third-party ONVIF-compliant IP video devices. See pp. 13-14 of this bulletin for instructions on how to use this feature.
- GiPi adapters released after September 14th, 2016 are not compatible with Windows XP.
- The total number of IP cameras supported at the same time by the SRX-Pro Server is subject to the purchased software license, and a combination of the following variables: SRX-Pro version, IP camera Manufacturer and Firmware version, the combination of resolution and frame rate settings used by the camera(s).
- The following special characters are not supported and may not be used in the IP device's login or password: ~ , . ; () [] { } - = ! @ # \$ % ^.

ONVIF support specifications and limitations, where supported by camera:

Discovery: Supported

Network settings setup: Supported

Video settings (resolution, frame rate): Supported

PTZ - Pan Tilt Zoom with continuous, Relative and absolute modes: Supported

PTZ - Iris/Focus: Currently not supported

PTZ - Set/Get preset: Currently not supported

Sub-stream: Supported

Channels support: 1/multi-channel

Supported codecs: h.264/MPEG4/MJPEG

Glossary:

Tested Models:

i3 International has tested the GiPi integration with these camera/encoder models.

Compatible Models:

The type of firmware on these IP devices is compatible with the camera/encoder models that have been tested by i3 International. As a result, there is a high likelihood that cameras/encoders in this list will also be supported by i3 GiPi module.

Discovery:

Yes – Use Search / Search & Add function on SRX-Pro Server to automatically detect your connected IP device.

No – Use Add / Manual Add function on SRX-Pro Server to enter your IP camera/encoder's brand, IP address, login and password, and other relevant information.

PTZ & Presets:

Yes – Both the camera and GiPi module support PTZ functionality and/or storage of Presets

No – Either the camera or GiPi module does not support PTZ functionality and/or Preset storage

#of chnls

Number of channels. This field specifies the number of video channels offered by the integrated IP device and supported by GiPi.

of strms per chnl

Number of streams per channel. This field specifies the number of video streams per video channel offered by the integrated IP device (where applicable) and supported by GiPi.



Manufacturer	Tested Models	Compatible Models	Discovery	PTZ & Presets on Compatible Models	# of chnls	# of strms per chnl	Supported codecs / Notes
i3 International	Annexus 32VD1 Annexus 32V2M2 Annexus 32V2M4 Annexus 32V2M8	All Annexus 32 series	Yes	No	1	2	h.264/MJPEG For save/reboot support, use SRX-Pro 3.0 or higher. Save HTTP Port function is not supported on FW v.4.0 and higher.
	Annexus 46R Annexus 46DC Annexus 66R	All Annexus 46 and Annexus 66 series	Yes	No	1	2	h.264/MJPEG For save/reboot support, use SRX-Pro 3.0 or higher
	Annexus 516	All Annexus 5xx series	Yes	Yes	16	2	h.264/MJPEG For save/reboot/ptz support, use SRX-Pro 3.0 or higher.
	Annexus 36	All Annexus 36 series	Yes	Yes	11	14	MPEG4/MJPEG
	Annexus 49 Annexus 50 Annexus 51 Annexus 52 Annexus 52C	NA	Yes	No	1	3	h.264/MPEG4/MJPEG
	Annexus 40W Annexus 61 Annexus 62 Annexus 62C	NA	Yes	No	1	3	h.264/MJPEG
	Annexus 63Z	NA	Yes	Yes	1	3	h.264/MJPEG Firmware 0.1.4536, or higher. New default account i3admin/i3admin - FW ver. ANNEXUS 63Z.0.1.5025
	Annexus 73RM	NA	Yes	Yes (Zoom and Focus)	1	3	h.264/MJPEG
	Annexus 68R Annexus 78R	NA	Yes	Yes	4	2	h.264/MJPEG The number of channels and number of streams is camera mode-dependent.
	Annexus 45R Annexus 65R	All Annexus 45 and Annexus 65 series	Yes	Yes (Zoom and Focus)	1	3	h.264/MJPEG For Zoom and Focus support, use SRX-Pro 3.5 or higher
	Annexus 47R Annexus 47R2 Annexus 47R4 Annexus 67R	All Annexus 47 and Annexus 67 series	Yes	No	1	3	h.264/MJPEG
	HR16	NA	Yes	Yes	16	2	h.264
	Annexus 48DC	NA	Yes	No	1	2	h.264/MPEG4/MJPEG This product is not yet available for purchase
	Annexus 65Z	NA	Yes	Yes	1	3	h.264/MJPEG This product is not yet available for purchase
	Annexus 75RM	NA	Yes	No	1	3	h.264/MJPEG This product is not yet available for purchase

i3 INTERNATIONAL TECHNICAL BULLETIN **Technical Bulletin # 160526-SW-02**

Manufacturer	Tested Models	Compatible Models	Discovery	PTZ & Presets on Compatible Models	# of chnls	# of strms per chnl	Supported codecs / Notes
ACTI	Veo17	NA	Yes	Yes	16	2	h.264
	ACM-4201 ACM-3701	NA	Yes	No	1	1	
	E96	NA	Yes	No	1	1	h.264/MJPEG
Arecont	AV8185DN	AV8180 AV8185 AV20185DN AV8360 AV8365 AV8365DN AV20365DN	No	No	4	1	h.264/MJPEG
	AV3155	NA	No	No	1	1	h.264/MJPEG
	AV5105DN AV2000 AV2100 AV3100 AV5100	NA	No	No	1	1	MJPEG
AXIS	Q1755	All camera models with Firmware 4.xx/5.xx	Yes	Zoom only	1	Unlim.	h.264/MJPEG
	M1031-W P3301 211			No			
	214 Q6035-E 241Q M7001 209MFD			Yes			
	M3007-PV 360	All fisheye 360° camera models with FW v.5.xx		4	1		
	M3027-PVE 360	All fisheye 360° camera models with FW v.6.xx		4	1		
BASLER	BIP-1300c BIP2-640c-dn BIP2-1000c-dn BIP2-1300c-dn BIP2-1600c-dn	all BIP- and BIP2-models should be supported	Yes	No	1	1	h.264
Bosch	NDC-265-P	NBC-225-P NBC-255-P NBC-255-W NTC-255-PI NDC-225-P NDC-255-P NDC-225-PI NBC-265-P NBC-265-W NTC-265-P NDC-265-P NDN-265-PIO	No	No	1	3	h.264/MJPEG Firmware limitation: slow streaming refresh rate.
Brickcom	WCB-502Ap	NA	No	No	1	3	h.264/MPEG4/MJPEG (Note: Two sub-streams are recognized as separate channels)

Manufacturer	Tested Models	Compatible Models	Discovery	PTZ & Presets on Compatible Models	# of chnls	# of strms per chnl	Supported codecs / Notes
Brickcom (cont.)	VD-130Ap FB-100Ap FB-130Np	CB-100Ap CB-101AP CB-102AP FB-300Np FD-100Ap FD-130Np FD-132Np FD-300Np GOB-100Ap GOB-130Np GOB-132Np GOB-300Np GOB-302NP MD-100Ap MD-300Np OB-100AP OB-130Np OB-132Np OB-300Np OB-302Np VD-100Ap VD-130Np VD-132Np VD-300Np WCB-100Ap WFB-100Ap WFB-130Np WOB-100Ap WOB-130Np WOB-132Np WOB-300Np WOB-302Np	Yes	No	1	1	h.264/MPEG4/MJPEG
Canon	VB-C60	VB-C300 VB-C500 VB-C50i VB-C50iR VB-C50FSi	No	Yes	1	1	MJPEG
	VB-M40	VB-M600VE VB-M600D VB-M700F				2	h.264/MJPEG For h.264 codec support, use SRX-Pro 3.1 or higher
	VB-H41 VB-H43	VB-H series	No	Yes	1	2	
	VB-H630D VB-H730F		No	No	1	2	
	VB-S30D		VB-S series	No	Yes	1	



Manufacturer	Tested Models	Compatible Models	Discovery	PTZ & Presets on Compatible Models	# of chnls	# of strms per chnl	Supported codecs / Notes
CNB	IDP4000VR IDC4000T	IBP5030CR IDB4110NVF/PVF IDC4050F IDC4050IR IDC4050VF IDC4050VR IDP4000VD IDP4030VR IGB1110NF/PF IGC2050F IGP1000F IGP1030 IJB2000 INS2000 IPM3063N/P ISMC1063N/P ISS2765NW/PW ISS2965NXW/PXW IVB4110NVF/PVF IVC5055VR IVP4000VR IVP4030VR	Yes	No	1	2	h.264/MPEG4/MJPEG
FINE	CDV-3VM501	CDV-3V930 CDV-3VM301 EDH-01 HLV-1CAG MD-D1200 MD-D1612 TCMA-99 TCMP-99 TCP-670DNU TCP-680DNU TCP-690DNU TCP-690U TCP-HP930 TCP-HP960 TCP-IPWD690 TCP-IR590 TCP-IRH5030 TCP-IRV540 TCP-IRV560 TCP-IRWH540 TCP-M912DN TCP-MH802 TCP-VM201 TCP-VM501 WB-8211SD WB-8412(SD) WB-H811 WB-H812 WB-H814 WB-H818	Yes	No	1	1	h.264/MPEG4/MJPEG
FlexWATCH	FW1174	NA	No	No	1	1	h.264

i3 INTERNATIONAL TECHNICAL BULLETIN Technical Bulletin # 160526-SW-02

Manufacturer	Tested Models	Compatible Models	Discovery	PTZ & Presets on Compatible Models	# of chnls	# of strms per chnl	Supported codecs / Notes
FLIR	FC-334-R	FC series	Yes	No	1	1	h.264/MJPEG/MPEG4 Network setting must be saved via web interface. Applies to Nexus Server 2.5.17.13 or higher; BU version 1.1.2 and higher
	FC-D-625	D series	Yes	No	4	1	
GANZ	ZN-C2M ZN-DT2MA	NA	Yes	No	1	2	h.264/MJPEG
Geovision	GV-VD320D	All	Yes	No	1	1	h.264/MJPEG
Grandeye	ONCAM IPT	NA	No	Yes	1	1	MJPEG
HIKVISION	DS-2CD2112i DS-2CD7253F-EIZ	DS-2CD2XXX-series, DS-2CD7XXX-series, DS-2CD8XXX-series FW v. 4.0 or higher only	Yes	Yes	1	2	h.264/MJPEG For save/reboot/ptz support, use SRX-Pro 3.0 or higher
	DS-6515	NA	No	No	16	2	All settings must be set and saved via encoder's web interface.
	DS-2CD6332FWD-IV DS-2CD6362F-IV	DS-2CD6XXX-series	Yes	Yes	5	1	h.264/MJPEG
	DS-7216HGHI-SH	NA	Yes	Yes	18	2	h.264
IQinVision	IQ04xx IQ510 IQ70x IQ75x IQ85x IQA2xx IQD4xx	IQ51x IQ54xx IQ73xx IQ8xx IQ83xx IQA1xxf	No	No	1	1	MJPEG
	IQA3xx IQD3xx IQM3xx IQ732N IQ832S						h.264/MJPEG
	IQA31W IQA32WA IQA33WA IQD51W IQD52W IQD53W IQD55N	IQA3x IQD5xx					h.264/MJPEG
Infinova	V6201-N V6621-N V1726N-N	All N-series models	No	Yes	1	1	h.264/MJPEG
JVC	VN-V25U VN-V685U VN-X35U	VN-V686U VN-V686BU VN-V26U VN-V225U VN-X235U	No	Yes	1	1	MJPEG
Micropower	MPT2700 Minihub MPT2720 Minihub	NA	No	No	4	4	MJPEG
MOBOTIX	M24M-SEC	NA	Yes	No	1	1	MJPEG

Manufacturer	Tested Models	Compatible Models	Discovery	PTZ & Presets on Compatible Models	# of chnls	# of strms per chnl	Supported codecs / Notes
ONVIF Note: Supported only on SRX-Pro Server v.3.2.1 and higher	Avigilon 1.0W-H3PTZ-DC20	ONVIF-compatible models	No	Yes	1	2	h.264/MJPEG
	Avigilon 2.0-H3M-DO1		No	No	1	2	h.264/MJPEG
	AVTECH AVM428B		No	No	1	2	h.264
	AVTECH AVN420N		No	No	1	2	h.264/MPEG4
	Bosch NDC-265-P FLEXIDOME HD FLEXIDOME IP		Yes	No	1	3	h.264/MPEG4/MJPEG
	Canon VB-M40, VB-S30D, VB-H43		Yes	Yes	1	2	h.264/MJPEG
	Canon VB-H630D, VB-H730F		Yes	No	1	2	h.264/MJPEG
	DAHUA IPC- HFW4300SN-0360B		Yes	No	1	2	h.264/MJPEG
	Digital Watchdog DWC-MF21M8TIR		Yes	No	2	1	h.264/MPEG4/MJPEG
	FLIR T43		Yes	No	1	2	h.264/MJPEG
	GANZ HSW-H37-4		Yes	No	1	2	h.264/MJPEG
	GANZ ZN-MD221M		Yes	No	1	2	h.264/MJPEG Note: Frame rate setting must be configured via the browser.
	GANZ ZN1-V4FN3 HD Indoor Pinhole		Yes	No	1	1	h.264/MJPEG
	HIKVISION DS-2CD6332FWD-IV DS-2CD6362F-IV		Yes	Yes	5	1	h.264/MJPEG
	Panasonic WV-SF336		Yes	No	1	2	h.264/MJPEG
	Samsung SND-5061, SND-7080R, SNO-7084R		No	No	1	2	h.264/MJPEG
	ViewZ VZ-PVM-I2B1		Yes	No	1	2	h.264/MPEG4/MJPEG
	Vivotek FE8172		Yes	No	1	2	h.264/MPEG4/MJPEG
	WatchNet MPIX-20VDV-IRM		No	No	1	2	h.264/MJPEG Must use admin/admin account and Port 9988
	March Networks C1801A (ATM camera)		Yes	No	1	2	Primary Stream: h.264 Sub-stream: h.264/MJPEG Notes: - Username and password must be configured - Camera and Client Date/Time and Time Zone must match within 1-2 mins. - Port 8000 must be used to add. Remove ":8000" from camera's IP address when accessing Web Setup from SRX-Pro Server.

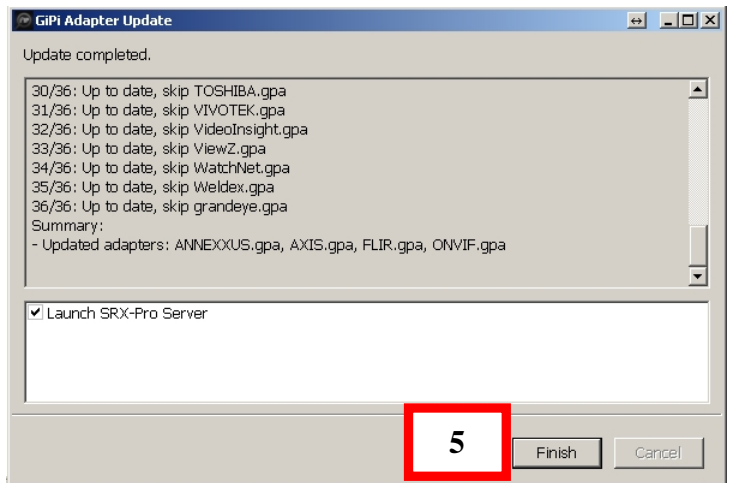
Manufacturer	Tested Models	Compatible Models	Discovery	PTZ & Presets on Compatible Models	# of chnls	# of strms per chnl	Supported codecs / Notes
Panasonic	BB-HCM701A	BB-HCM715/735 BB-HCM705 BB-HCM701 BL-C230 BL-C210 BB-HCM7xx (firmware v.4.30R00 or later)	Yes	No	1	1	MPEG4/MJPEG
	WV-SF336	NA	No	Yes	1	2	h.264/MPEG4/MJPEG
	WV-NW484 WV-NP304 WV-SF335 WV-SF332 WV-NS202 WV-NS202A	DG-GXE500 DG-SP305 DG-SP304V DG-SF335 DG-SF334 DG-SC385 DG-SP102 WJ-GXE500 WJ-NT304 WJ-NT314 WV-NF284 WV-NF302 WV-NP244 WV-NP502 WV-NP1000 WV-NS954 WV-NW964 WV-NW502 WV-SP306 WV-SP305 WV-SP302 WV-SC385 WV-SP105 WV-SP102	No	Yes	1	1	MPEG4/MJPEG
	WV-NP472 WV-NS324	WV-NS32x WV-NW47xS	No	Yes	1	1	MPEG4/MJPEG
	WV-NM100	NA	No	PTZ - Yes Presets - No	1	1	MJPEG. No RTSP support.
	PELCO	IXE20DN D5118	NA	Yes Yes	No Yes	1 1	2 2
PIXORD	PD636E	NA	Yes	No	3	3	h.264/MJPEG
Samsung	SND-7080 SND-5080N SNB-5000N	NA	No	No	1	1	h.264/MPEG4/MJPEG
	SND-560	NA	No	No	1	1	MPEG4/MJPEG
	SNV-6048R	NA	Yes	No	1	1	h.264/MJPEG
	SNO-7084R	NA	Yes	No	1	1	h.264
Sentry	IS-IP14K-DN	Sentry 360 Pro Series: IS-IP14K	Yes	No	1	2	h.264
	FS-IP3000	Sentry 360 Mini Series: FS-IP5000-M FS-IP3000-M	Yes	No	1	1->4	h.264/MJPEG
Scallop Imaging	D7-180	NA	No	No	1	2	h.264

Manufacturer	Tested Models	Compatible Models	Discovery	PTZ & Presets on Compatible Models	# of chnls	# of strms per chnl	Supported codecs / Notes
SONY	SNC-CH120	5th Generation: SNC-CH110 SNC-CH120 SNC-CH140 SNC-CH160 SNC-CH180 SNC-CH210 SNC-CH220 SNC-CH240 SNC-CH260 SNC-CH280	No	No	1	2	h.264/MPEG4/MJPEG For h.264/MPEG4 codec support, use SRX-Pro 3.1 or higher
	SNC-DH240 SNC-DH120 SNC-DH210 SNC-RH124	5th Generation: SNC-DH120 SNC-DH120T SNC-DH140 SNC-DH140T SNC-DH160 SNC-DH180 SNC-DH220 SNC-DH220T SNC-DH260 SNC-DH240 SNC-DH240T SNC-DH280 SNC-DH110 SNC-DH110T SNC-DH210 SNC-DH210T SNC-RH124 SNC-RH164		Yes			
	SNC-RX530N	SNC-RX530 SNC-RX550 SNC-RX570 SNC-RZ50	No	Yes	1	1	h.264/MPEG4/MJPEG For h.264/MPEG4 codec support, use SRX-Pro 3.1 or higher
	SNC-CS3N SNC-CS11	SNC-CS50 SNC-DF50 SNC-DF80 SNC-DF85	No	No	1	1	MPEG4/MJPEG For MPEG4 codec support, use SRX-Pro 3.1 or higher
	SNC-CX600W SNC-EB600 SNC-EB600B SNC-EB630 SNC-EB630B SNC-VB600B SNC-VB600 (w/ SD) SNC-VB600B SNC-VB630 (w/ SD)	6th Generation	No	No	1	3	h.264/MJPEG For h.264/MJPEG codec support, use SRX-Pro 3.1 or higher
	SNC-EM600 / EM601 SNC-EM630 / EM631 SNC-EM602R SNC-EM632R SNC-VM600 SNC-VM600B SNC-VM630 (w/ SD) SNC-VM632R			Yes			
	SNC-HM662			Yes			h.264/MJPEG HTTP Port must be set and saved via web interface.

Manufacturer	Tested Models	Compatible Models	Discovery	PTZ & Presets on Compatible Models	# of chnls	# of strms per chnl	Supported codecs / Notes
StarDot	SDH500BN	NetCam SC/XL Cameras	No	No	1	1	h.264/MJPEG
		Express 2/4 Video Server					
TOSHIBA	IK-WR01A	NA	No	No	1	1	MJPEG
Video Insight	DS-6516HF	DS-6516HF	No	No	16	2	h.264
ViewZ	VZ-PVM-I2B1	NA	No	No	2	1	h.264/MJPEG
VIVOTEK	FD8133 FD8134	IP8xxx FD8xxx SD8xxx All 8000 Series	Yes	Yes	1	4	h.264/MPEG4/MJPEG
	FE8172(V)	NA	Yes	No	1	3	
Watchnet	MPIX-20VDV-IRM	NA	Yes	No	1	2	h.264/MJPEG
Weldex	WDP-21BMP2	NA	Yes	No	1	1	h.264/MJPEG UPnP must be enabled on the camera to support Discovery. Device limitations: IP address and Port may not be changed at the same time. IP address conflict will cause device lock-up.

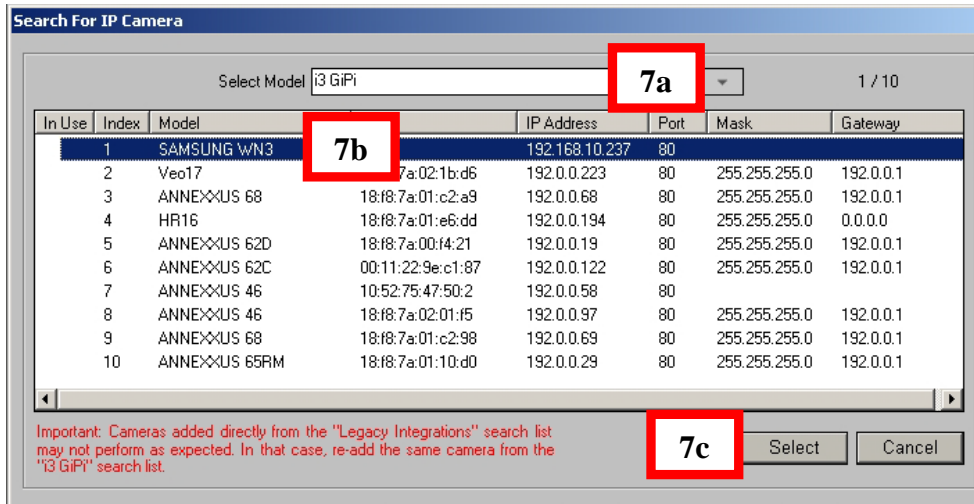
Connecting the integrated IP device (from the list above) to the SRX-Pro Server:

- Download the latest GiPi file from i3 website: <http://i3international.com/software-downloads>, under **SRX-Pro Add-ons** section.
- Press **Ctrl + Shift + Alt + F4** and enter SRX-Pro administrative password to access the Desktop.
- Extract the downloaded *.zip GiPi package and run the extracted *.exe GiPi file.
- Click **Update** in the GiPi Adapter Update window.
- Wait until the GiPi adapter installation completes, and click **Finish** to close the GiPi window and to launch the SRX-Pro Server (ensure that "Launch SRX-Pro Server" checkbox is enabled).
- Once SRX-Pro Server loads, go to **Setup > IP Camera** setup page.
Depending on the GiPi discovery status of your IP device (see table above), you will need to either Search or Add your IP device manually.
(If the **Discovery** status in the chart above says "Yes" for your IP device model, proceed to Step 7. Otherwise, skip Step 7 and go to Step 8).



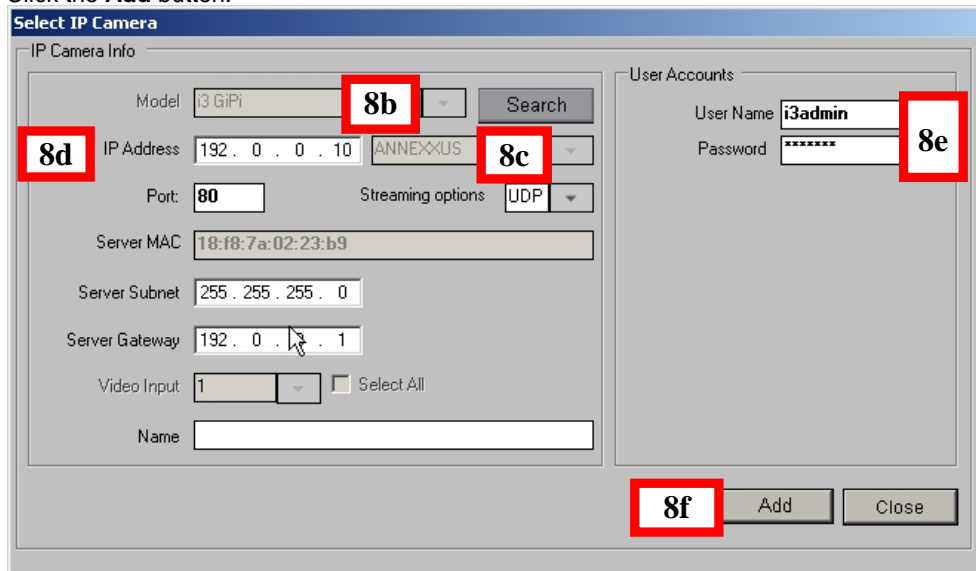
7. If the **Discovery** status in the chart above says **“Yes”** for your IP device model,

- a. Click the **Search** **Search** or **Search & Add** **Search & Add** button in the IP Camera tab.
- b. Make sure **i3 GiPi** is selected in the drop-down menu and let the SRX-Pro Server locate your connected IP device on the network.
- c. Once your IP device has been discovered, select it in the list and click **Select**. Next, go to step **8e**.



8. If the **Discovery** status in the chart above says **“No”** for your IP device model,

- a. Click the **Add** **Add** or **Manual Add** **Manual Add** button in the IP Camera tab.
- b. Make sure **i3 GiPi** is selected in the Model drop-down menu.
- c. Select the IP device manufacturer from the drop-down menu next to the IP Address field. In this case, **“Samsung”** has been selected.
- d. Enter the **IP Address**.
- e. Enter the **User Name** and **Password**.
- f. Click the **Add** button.



- Your IP device will be added to the All Cameras list in the lower half of the setup page. In the **Ch. In.** (Channel Input) drop-down menu, assign the added IP device to one or more video channels. In this example, the new Samsung camera has been assigned to Video Channel #1.

Camera	IP Address	Input	Resolution	FPS	Ch In.	Name
All Cameras						
ANNEXXUS 78						
ANNEXXUS 78	192.0.0.10 (80)	1	1280x1280	15	1. Channel 1	
ANNEXXUS 78	192.0.0.10 (80)	2	2048x768	10	<input checked="" type="checkbox"/> 1. Channel 1	
ANNEXXUS 78	192.0.0.10 (80)	3	1024x768	10	<input type="checkbox"/> 2. Channel 2	
ANNEXXUS 78	192.0.0.10 (80)	4	1024x768	10	<input type="checkbox"/> 3. Channel 3	
ANNEXXUS 78	192.0.0.10 (80)	5	1024x768	10	<input type="checkbox"/> 4. Channel 4	
					<input type="checkbox"/> 5. Channel 5	
					<input type="checkbox"/> 6. Channel 6	
					<input type="checkbox"/> 7. Channel 7	
					<input type="checkbox"/> 8. Channel 8	
					<input type="checkbox"/> 9. Channel 9	
					<input type="checkbox"/> 10. Channel 10	

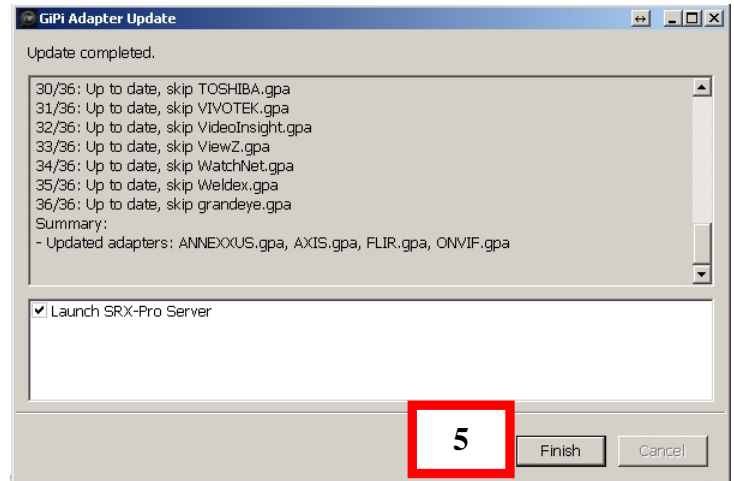


- Click the **Save** button to save your settings.

Connecting the ONVIF-compliant IP device to SRX-Pro Server via GiPi.

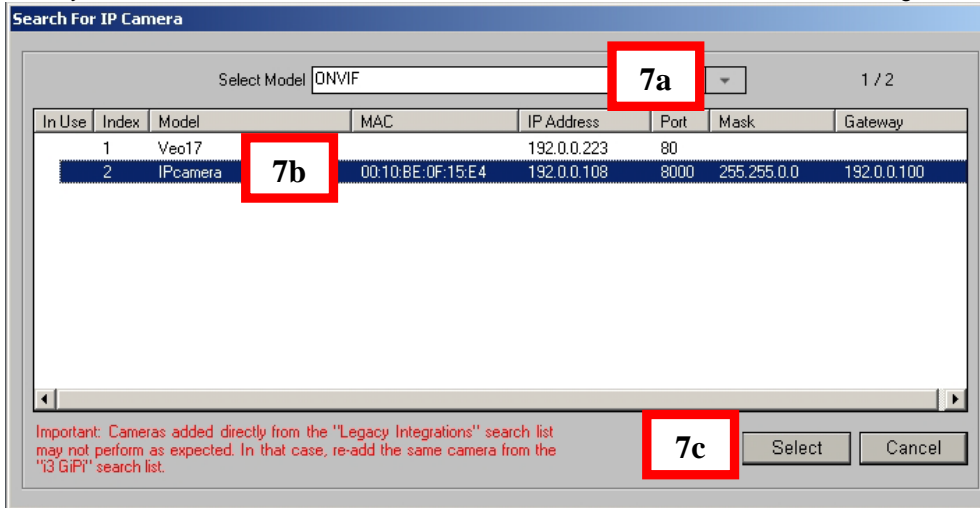
In order to connect a new ONVIF-compliant IP device to SRX-Pro Server, follow these instructions:

- Download the latest GiPi file from i3 website: <http://i3international.com/software-downloads>, under **SRX-Pro Add-ons** section.
- Press **Ctrl + Shift + Alt + F4** and enter SRX-Pro administrative password to access the Desktop.
- Extract the downloaded *.zip GiPi package and run the extracted *.exe GiPi file.
- Click **Update** in the GiPi Adapter Update window.
- Wait until the GiPi adapter installation completes, and click **Finish** to close the GiPi window and to launch the SRX-Pro Server (ensure that "Launch SRX-Pro Server" checkbox is enabled).
- Once SRX-Pro Server loads, go to **Setup > IP Camera** setup page. Depending on the ONVIF discovery status of your IP device (see table above, under ONVIF manufacturer), you will need to either Search or Add your IP device manually. (If the **Discovery** status says "Yes" for your ONVIF IP device model, proceed to Step 7. Otherwise, skip Step 7 and go to Step 8).



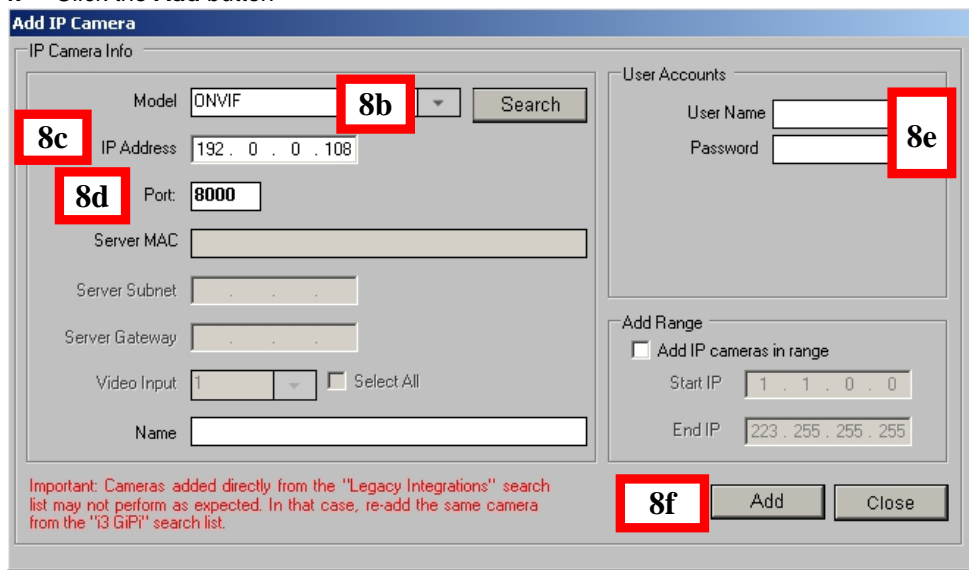
7. If the ONVIF **Discovery** status for your ONVIF-compliant device says “Yes”,

- a. Click the **Search** Search or **Search & Add** Search & Add button in the IP Camera tab.
- b. Make sure **ONVIF** is selected in the drop-down menu and let the SRX-Pro Server locate your connected IP device on the network.
- c. Once your IP device has been discovered, select it in the list and click **Select**. Next, go to step 8e.



8. If the **Discovery** status in the chart above says “No” for your IP device model,

- a. Click the **Add** Add or **Manual Add** Manual Add button in the IP Camera tab.
- b. Make sure **ONVIF** is selected in the Model drop-down menu.
- c. Enter the **IP Address**
- d. Enter or adjust **Port** number (if required by your device).
- e. Enter the **User Name** and **Password**.
- f. Click the **Add** button



9. The camera will be added to the All Cameras list in the lower half of the setup page. In the **Ch. In.** (Channel Input) drop-down menu, assign the added IP camera to one or more video channels. In this example, the new camera has been assigned to Video Channel #1.

Camera	IP Address	Input	Resolution	FPS	Ch In.	Name
All Cameras						
March Networks ATM Camera	192.0.0.108 (8000)	1	2048x1536	26	1. Channel 1	

- 1. Channel 1
- 2. Channel 2
- 3. Channel 3
- 4. Channel 4
- 5. Channel 5
- 6. Channel 6
- 7. Channel 7
- 8. Channel 8
- 9. Channel 9
- 10. Channel 10

10. Click the **Save** button to save your selection.



Please contact technical support if you have any questions or issues.

Email: support@i3international.com

Tel.: 1.877.877.7241

Live Chat: http://i3international.com/vaas_chat_box.html (Enter your name, email address and select Tech Support from the drop-down menu, then click **Start chat**)

i3 International Inc. Technical Support and Services