



# i3 PACDM Integration Request Form

Last Revised: 160331

All fields are mandatory; please fill the form out completely; incomplete forms will not be reviewed. Once the information has been reviewed, we will contact you to provide you with further details regarding the integration.

Please return the completed Forms to **Bob Hoang**, Technical Director at i3 International, Inc. by fax: 1-888-222-0559 or e-mail: [bob@i3international.com](mailto:bob@i3international.com).

Filled Out On (Date)	
Integration Requisitioner's Contact Info	
i3 Intl. RSM Name	
Company Name	
First and Last Name of the person requesting the integration	
Phone Number	
Email Address	
First and Last Name of the technical person that will perform the integration.	
Phone Number	
Email Address	

PAC (Point of Sale, ATM, Card Access) System Information	
What is the requested system to be integrated with i3 software? Select one.	Point of Sales    ATM    Card Access
Model Name/Part Number	
Software name and version number currently running on the PAC System	
The name of the hardware that the software resides upon? E.g. IBM, HP, Dell, off-the-shelf, or manufacturer's device.	
Protocol to be used for the integration. Select one.	TCP/IP    Serial    UDP    Other (Specify) _____

Fill out this portion for SERIAL Integrations ONLY	
What port is used on the PAC system for data collection?	
Does this port need to be initialized by a script or otherwise activated in order to transfer data or does this port provide data automatically?	
Will the data be collected from multiple systems and fed into one port for data collection?	
Where the port is physically located on the system (and which port is to be used if there are multiple ports)? For example on the pole display or on the server itself, etc.	
Are there any charges/fees from the PAC supplier for opening the port?	



# i3 Partner PACDM Integration Policy

Last Revised: 160331

i3 International stands for an outstanding customer experience, and whenever mutually beneficial, will integrate with the third party ONVIF-compliant IP devices, such as IP cameras, encoders and more. The determination on whether the integration is approved is made by the i3's management based on the future business potential for i3 International.

In order to be considered for the integration, the device manufacturer or the end user must supply i3, at no charge with the following:

**1. Current and valid MND A**

Requisitioner company must have a current and valid MND A on file with i3 International Inc.

**2. Pin Schematic**

Please provide the pin schematic from your device. A physical drawing of the pin layout from the POS device to i3 Server is very important to complete the process of integration.

**3. Captured Data**

The required data capture software is available for download from our FTP site. See i3 Data Capture Instructions section of this document for additional instructions. Three days' worth of data is required (average activity) along with the corresponding receipts. Ensure that your data includes all discrepancy items (e.g. Voids, No sale, etc.) as the PAC system needs this information so that it can be built into the database.

**4. Your company logo** for i3 Partners web page (POS Manufacturer only).

**5. Engineering contact** to address technical issues that may arise from this integration and to provide support, as needed.

**6. An Integration Fee of \$10,000.**

This fee, minus \$1,000 is refundable only if the integration cannot be completed due to technical issues out of i3's control.

*Note, provided enough ROI exists and the compelling business case for the integration is made by the Requisitioner, this fee may be waived at a sole discretion of i3 International.*

Scheduling of and allotment of Engineering Resources for the purposes of your IP GiPi Integration will commence once the above requirements are met by the third party requesting the integration.

A copy of i3 International Logo is available from your marketing purposes from our marketing department. Please contact **Catherine Larouche** at [catherine@i3International.com](mailto:catherine@i3International.com).

Requisitioner's Signature: \_\_\_\_\_

<b>OFFICE USE ONLY:</b>	
i3 Authorizing Signature:	_____
Integration Completion Date Commitment:	_____ CEO Initial: _____
	<i>MM / DD / YYYY</i>

## Data Capture Program

Before an external device such as POS, ATM, or Card Access can be integrated with the i3 International product line, data must be gathered for analyzing and template building. The Data Capture executable program will allow integrators to capture data. The program reads system information from an available port on the POS, ATM, or Card Access (PAC) system and collects this information on a PC running the Data Capture. The Data Capture program can be executed on any Windows operating system running Windows 7 or XP.

## Serial and TCP/IP communication

If the data is to be captured using the serial protocol, a custom cable needs to be built to connect the external system to the PC running the Data Capture program. The exact pin schematics will be required from the manufacturer of the PAC system in order to build the specific cable. When a system uses TCP/IP or UDP communication, an IP address needs to be configured so that the Data Capture program knows where to retrieve the data.

Data collected from the Data Capture Program can be in ASCII, encrypted, text or XML format.

Data collection process can be accomplished in one of three ways.

### Data Collection Method 1: You have SRX-Pro Server with PACDM license.

1. Log into the SRX-Pro Server.
2. Go to Setup and click onto Text Overlay tab. If Text Overlay tab is grayed out, proceed to Method 2.
3. Select the Enable data collector check box to activate the program.
4. Select Save icon.
5. Data Collector window will pop up automatically. Proceed to "Setting up the Data Capture Program section".

### Data Collection Method 2: You have SRX-Pro Server without PACDM license.

To run the Data Capture program from SRX-Pro Server installation directory:

1. Exit SRX-Pro Server by pressing Alt + Shift + Ctrl + F4 on the keyboard.
2. Enter administrative password and click OK.
3. Go to C:\i3Pro Server and run datac.exe file.
4. Data Collector window will pop up automatically. Proceed to "Setting up the Data Capture Program section".

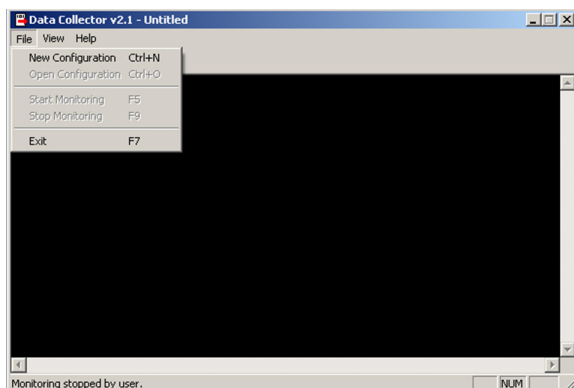
### Data Collection Method 3: You have no DVR or SRX-Pro Server.

1. Download the Data Capture program from i3's website:  
[http://i3international.com/assets/software/pacdm/PACDM\\_Data\\_Collector.zip](http://i3international.com/assets/software/pacdm/PACDM_Data_Collector.zip)
2. Extract Data\_Collector.zip file and run datac.exe file.
3. Data Collector window will pop up automatically. Proceed to "Setting up the Data Capture Program section".

## Setting up the Data Capture Program

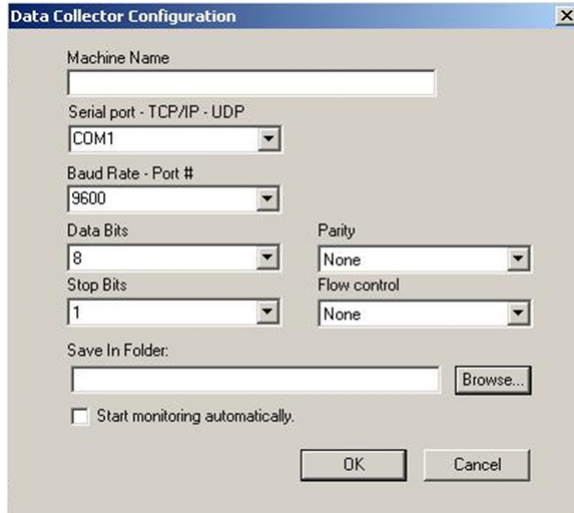
After the Data Capture program has been activated, the Communication configuration must be set up between the PAC system and the PC (or SRX-Pro Server) running the Data Capture program.

In the Data Collector window, click File -> New Configuration. Data Collector Configuration window will be displayed.



## Data Collection via Serial Communication

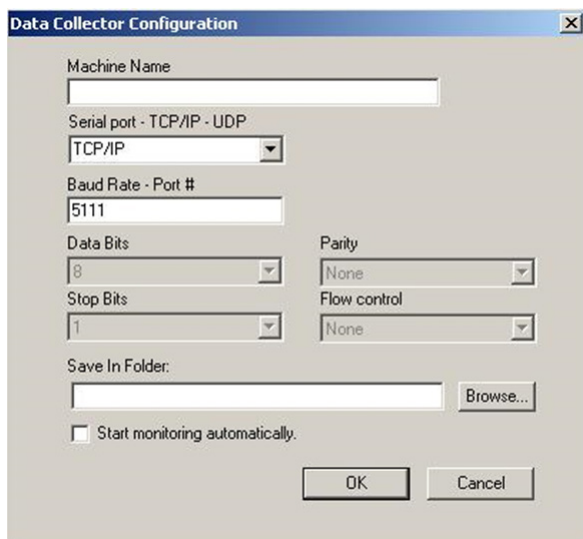
Follow these instructions if data is collected using **serial communication**:



1. Enter **Machine Name** by typing in the name of the machine you are collecting the data from. This file will be forwarded to i3 International for the template building process.
2. From the 'Serial port-TCP/IP' dropdown menu, select the COM port that will be used for data collection.
3. From the 'Baud Rate – Port#' dropdown menu, select the Baud rate that the PAC system will use to deliver data.
4. From the 'Data Bits' dropdown menu, select the Data Bits that the PAC system will use to deliver data.
5. Click the browse button to select the directory where you would like to store the collected data in.
6. Enable the "Start monitoring automatically" checkbox.
7. Click **OK** to begin the data collection process.

## Data Collection via TCP/IP (UDP) Protocol

Follow these instructions if data is collected using **TCP/IP (UDP) protocol**:



1. Enter **Machine Name** by typing in the name of the machine you are collecting the data from. This file will be forwarded to i3 International for the template building process.
2. From the 'Serial port-TCP/IP' dropdown menu, select TCP/IP to indicate that the PAC system is using TCP/IP communication.
3. In the 'Baud Rate – Port #' field; enter the port number for the PAC system that will be used to collect data. The recommended port is 5111.
4. Press the browse button to select the directory where you would like to store the collected data.
5. Enable the "Start monitoring automatically" checkbox.
6. Click **OK** to begin the data collection process.

**Note:** Follow the same procedure for UDP communication.

When the data has been completely collected and includes **ALL** transaction types including discrepancy items such as VOID, NO SALE, etc., the file can be forwarded to **Yury Zimin** at [yury@i3international.com](mailto:yury@i3international.com). This file will be used to build a template that provides text overlay capabilities and delivers data to the database to enable search functionality.